



**CORPORATE  
PROFILE**





TOKYO CEMENT GROUP is a company intricately linked with Sri Lanka's growth. We are the undisputed market leader in cement and concrete, with the largest installed capacity. With brands that have become trusted household names in every corner of the country, that also include a range of innovative cement based products, we have completely transformed the way Sri Lanka builds.

A pioneer in every sense of the word, Tokyo Cement proudly claims a number of industry firsts, including the setting-up of Sri Lanka's first automated cement factory. Tokyo Cement is the first local company to achieve ISO 14001 Environment Management Systems Certification and the first cement manufacturer to achieve ISO 9001 Quality Management Systems Certification. Keeping quality at the forefront, we continue to invest in innovative processes, modern factories and top-grade raw material to raise the bar on quality and cement our market position.

As a champion of sustainability, we have pledged to take us and our future generations towards a greener, healthier, and sustainable tomorrow. We have successfully ingrained social welfare and environmental conservation in to our corporate DNA as part of this resolute to enrich our country, our people and the environment. Our Biomass Energy program, which makes us 100% energy independent and reduces our carbon footprint, stands proof of this commitment. Our keystone environmental initiatives; that make up who Tokyo Cement Group is, such as our Coral Reef Rehabilitation, Mangrove Reforestation and Forestry Nurseries programs, exemplify our belief in conserving those critical parts of the environment in order to sustain our country's incomparable biodiversity.

Our journey speaks of how a true leader achieves profitable growth and earn shareholder confidence by bringing to life his vision of a sustainable and socially conscious business. As a true Sri Lankan, TOKYO CEMENT GROUP remains committed to build our nation to reach its fullest potential.





# Our Vision

To be the leading partner in nation-building; setting standards that exceed expectations.

# Our Mission

Reinforcing market leadership by empowering our people, driving innovation, pursuing sustainable development, assuring consistent quality, and committing to impeccable service; thereby building shareholder value and cementing consumer trust.

# OUR HISTORY



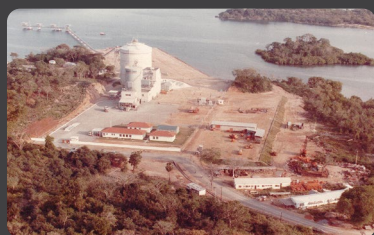
Tokyo Cement Company (Lanka) PLC was established as a joint venture between Japan's Mitsui Mining Co. (later acquired by Nippon Coke and Engineering Co.) and Sri Lanka's St. Anthony's Consolidated, under the visionary leadership of Founder Chairman Deshamanya A.Y.S. Gnanam.

1982



Commissions first concrete batching plant in Trincomalee with a capacity of 1m<sup>3</sup>, to construct the Ashroff Jetty; first commercial jetty at China Bay Port.

1984



Commissions Sri Lanka's first private sector Cement Grinding Mill with a capacity of 30 MT/h, and gets listed on the Colombo Stock Exchange.

2000



Commissions the Cement Terminal at the Port of Colombo with an annual capacity of 600,000 MT.

2002



Commissions Sri Lanka's first 10 MW Biomass Power Plant in Trincomalee, allowing Tokyo Cement's production to be completely energy independent.

2008



Commissions TOKYO SUPERSAND, a manufactured sand production plant that can produce 6000 Cubes of sand per month, with a crushing capacity of 100 MT/h.

2014

2015

2017



Tokyo Cement Power (Lanka) commissions Sri Lanka's 1st large-scale Dendro Power Plant with a 6 MW capacity in Mahiyangana, which supplies Green electricity to over 30,000 rural households.



Tokyo Eastern Cement Company (Pvt) Ltd., commissions a new plant that adds 1 Million MT to the existing capacity of Tokyo Cement, bringing the total annual production capacity to 2.8 Million MT.

Inauguration of the second Tokyo Eastern Biomass Power Plant in Trincomalee makes us Sri Lanka's single largest non-hydro contributor of renewable energy with a total capacity of 24MW.

This investment included; installing a new dry mortar manufacturing plant, commissioning an additional 8 MW biomass power plant to power the increased capacity, and the expansion of Tokyo Cement's private jetty to accommodate larger vessels.



**No.1 Blended Hydraulic Cement brand in the market**  
(using flyash to reduce carbon footprint)

**Established in 1982**



**No.1 Cement and Concrete producer in the market**



**2.8 Million MT**  
Manufacturing capacity as at 2018



**1300+**  
direct employment  
and 2000+ indirect  
employment opportunities



**Integrated jetty into manufacturing line**

(for inflow of raw materials and outflow of finished products)



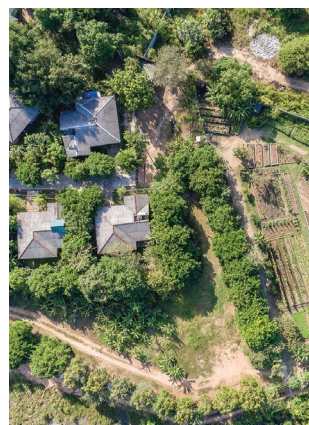
The only cement manufacturer with own vessels

**17,500 MT** **35,000MT**  
cement vessel clinker vessel



The A.Y.S. Gnanam Construction Training Academy has produced

**1000+** trained and NVQ qualified masons



**6 million**  
**Gliricidia trees**  
planted in Mahiyangana & Trincomalee



**BEST CORPORATE CITIZEN**  
SUSTAINABILITY AWARD





The Construction Research Centre is Sri Lanka's 1st ISO 17025 certified cement, concrete and dry mortar product testing laboratory



**900,000 MT**  
Packing capacity at Tokyo Cement Colombo Terminal



the only  
Grade 52.5 N  
cement in  
the market



**Widest range of  
cement-based products**



**Market Leader in  
Tile adhesive**



**5000+**  
retailers Island-wide



**100%**  
self-sufficient with  
renewable energy



**4 Grinding  
mills**



Our Sand Manufacturing  
plant produces  
**6000 Cubes  
per month**  
with a crushing  
capacity of 100 MT/h

BUSINESS TODAY  
**TOP 30**



**LMD 100**  
SRI LANKA'S LEADING LISTED COMPANIES

**BIODIVERSITY SRI LANKA**





TOKYO SUPER

TOKYO SUPER  
PORTLAND POZZALANA CEMENT

TOKYO SUPER

TOKYO CEMENT

# WHAT WE DO

We at TOKYO CEMENT GROUP continuously seek ways to bring more value to our customers, and help them do more with less. By investing in state-of-the-art production technologies and cutting-edge research and development, we have introduced a series of brands that have become trusted household names in every corner of the country.

This has helped us grow, from being the nation's largest Cement manufacturer, to become the market leader in Ready Mix Concrete, and Cement-based Dry Mortar products.

Our purpose is to help you build stronger, faster and smarter, cementing the trust you have placed on TOKYO CEMENT GROUP. With a range of novel construction solutions that 'exceed your expectations', we are ready to partner you throughout the building process, from the foundation to the finishes.



# NIPPON CEMENT

## BLENDED HYDRAULIC CEMENT

NIPPON CEMENT BHC is the premium brand of blended hydraulic cement manufactured by the Tokyo Cement Group, which conforms to SLS 1247:2015 strength class 42.5 N standard specifications.

The unique blend of NIPPON CEMENT BHC achieved by using fly ash, results in a blended cement that gains more strength over time, making it ideal for mega constructions and mass concreting. The fine blend creates more refined pores in the concrete, which makes it denser and compact, making it ideal for high-rises. This also reduces the rise of temperature in the concrete mix and prevents thermal cracking in mass concreting. Other benefits include sulphate resistance, and long-term protection of steel reinforcements against chemical attacks, assuring durable constructions in harsh environments (Marine, Marshy Lands, High-Sulphate Soils etc.)

Furthermore, up-cycling top-grade Fly Ash, a waste byproduct of coal power generation, makes NIPPON CEMENT BHC one of the most sustainable and greenest cements in the market.



# NIPPON CEMENT

## ORDINARY PORTLAND CEMENT

NIPPON CEMENT is the premium brand of Ordinary Portland Cement (OPC) manufactured by Tokyo Cement Group. NIPPON CEMENT OPC meets the stringent quality requirement specified by Sri Lanka Standard SLS 107:2015 Strength Class 42.5 R for Ordinary Portland Cement.

The Cement is suitable for structural and pre-cast concrete requiring high compressive strength.

Furthermore, as an R type cement, NIPPON CEMENT OPC can develop strength rapidly. It can be used as a general purpose cement as well.

NIPPON CEMENT OPC is compatible with most of the admixtures complying with BSEN and ASTM standards.





# TOKYO SUPER

## BLENDED HYDRAULIC CEMENT

TOKYO SUPER is a Blended Hydraulic Cement that proudly boasts the highest 100 day strength, corrosion protection that shields reinforcement from decay, suitable for building in marshy, marine and flooding conditions. Blended Fly Ash content in TOKYO SUPER BHC makes it the Greenest Cement in the market with the lowest carbon footprint.

TOKYO SUPER BHC is produced to conform to SLS 1247:2015 Strength Class 42.5N standard specification. This cement is highly resistant to chemical attacks and suitable for concreting and mortar in marine sulphate containing soil environments. The cement is a low heat cement and can be used for mass scale concreting.



# TOKYO SUPER

## ORDINARY PORTLAND CEMENT

TOKYO SUPER brand Ordinary Portland Cement is a general purpose cement which can be used in the production of all types of concrete used in structural and non-structural applications. TOKYO SUPER OPC meets the stringent quality requirement specified by Sri Lanka Standard SLS 107:2015 Strength Class 42.5 N for Ordinary Portland Cement.

Typical applications of TOKYO SUPER OPC include concrete slabs, driveways, mortars for brick and block work.

TOKYO SUPER OPC is compatible with most of the admixtures complying with BSEN and ASTM standards.





## THE NATION'S HIGHEST GRADE CEMENT

The bulk cement brand of Tokyo Cement Group, NIPPON CEMENT PRO is a high performance cement specially formulated for skyscrapers, super structures and large-scale projects that require high quality and ultra-strong concrete.

With the boom in demand for residential and commercial space in an already bustling metropolitan with limited land, the answer has been to build vertically and create architectural marvels that can house growing economic activities. With buildings that rise beyond 30 floors becoming the norm, NIPPON CEMENT PRO offers contractors, real estate developers and consultants, a high-strength concrete (exceeding C100) for condominiums, hotels and city centers that reach in excess of 50 floors. Because the concrete produced using NIPPON CEMENT PRO delivers a higher strength, it reduces the need for thicker columns, allowing for more open spaces that maintain the aesthetic appeal of built environments.

Another advantage of using NIPPON CEMENT PRO is its ability to maintain a stable temperature, which helps prevent thermal cracking and reduce the total cement requirement and thereby helping to reduce heat emanated, two critical success factors in mass concreting.



# PROJECTS



Colombo Port City



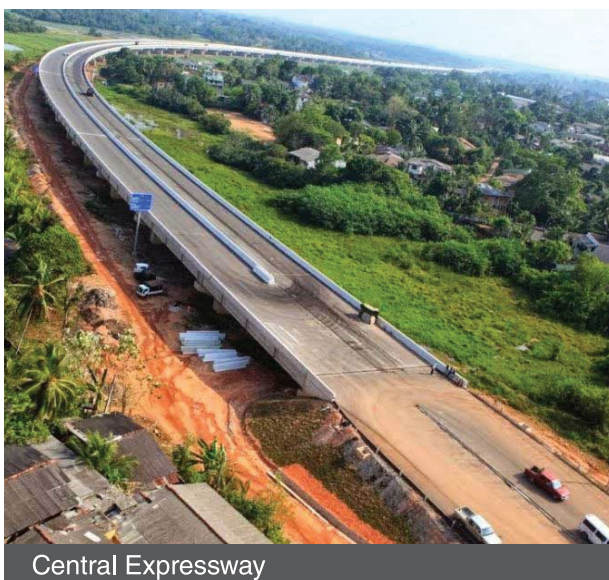
Southern Expressway Extension



Yan Oya Reservoir



Empire City Condominium



Central Expressway



Norochcholai Coal Power Plant

# PROJECTS



Bandaranaike International Airport



Havelock City Condominiums



Mannar Bridge Project



Hambantota Port



Hambantota Gas Farm



Manampitiya Bridge







# TOKYO SUPERBOND



## STANDARD SET

TOKYO SUPERBOND TILE ADHESIVE (STANDARD SET) is a thin set cement based tile adhesive, which can be used for fixing ceramic, porcelain terracotta, granite tiles etc. on mortar screed or concrete base. TOKYO SUPERBOND TILE ADHESIVE (STANDARD SET) can be used for fixing tiles on walls and floors. Highly workable mix with high water retention capability make fixing tiles on floors and walls easier, economical and resulting a high bond strength.



## HIGH PERFORMANCE

TOKYO SUPERBOND HIGH PERFORMANCE tile adhesive is specially formulated to result high bonding strength. In addition to using this adhesive for fixing all types of tiles, it is highly recommended for fixing large format tiles as much as 6ft x 3ft porcelain or fully vitrified tiles on floors and walls. This adhesive is suitable for fixing tiles on an existing tiled or cemented floor without breaking. Suitable for tiling kitchens and bathrooms where hot water is used frequently.



## PREMIUM

Specially formulated tile adhesive to lay large format tiles. This adhesive is suitable for fixing any floor and wall tiles (6' x 3' or 10' x 4') on new or existing tiled or cemented surfaces.





# TOKYO SUPERCAST

## PLASTER MASTER (REGULAR)

Just add water, mix and apply. Good workability, no dropping of mortar during plaster, easy to spread resulting in a high strength plaster with no hairline cracks. The smooth surface of the Tokyo Supercast plaster requires hardly any skim coating before painting.

Can add mineral pigments to make coloured plaster surfaces that do not require painting.

## PLASTER MASTER



## PLASTER MASTER (WEATHERSHIELD)

Specially formulated for external applications. Waterproofing capability of this product prevents dampness of external walls resulting from wind driven rain.

Economical and easy to apply. Can be mixed with colour pigments that are uv resistant, maintaining the colour longer than traditional painting.



## PLASTER MASTER (WHITE)

This new wall plastering formula comes with numerous advantages including higher efficiency, reduced labour requirement, elimination of entire wasteful processes and ultimately lower costs. This revolutionary product requires only one coat of application, removes the requirement of waiting for the plaster to set for a week and completely does away with the requirement of a traditional application of a skim coat for interior walls before painting. These features contribute towards significant cost savings, reduction in labour requirement, and considerable time savings for efficiency gains in construction projects.





# TOKYO SUPERSEAL

**STOPS  
DROPS**

## WATERPROOFER

TOKYO SUPERSEAL WATER PROOFER is a cement based material suitable for interior or exterior surfaces where water proofing is required.

TOKYO SUPERSEAL WATER PROOFER is highly resistant to standing water or wind driven rain water and intended for use in vertical, horizontal, and overhead surfaces. Typical uses are in water sealing bathrooms, overhead slabs, walls, joints etc.



# TOKYO SUPERSET

## SCREED MORTAR

TOKYO SUPERSCREED MORTAR is a mix of cement with filler and fiber. It is a ready to use mortar requiring only the addition of water. It can be used for interior and horizontal concrete slabs, balconies, side walks, parking decks and ramps.

The recommended thickness is 5-20 mm and product coverage is 15 sq. ft with 12.5 mm thickness per 25kg. Sudden drying after laying Superscreed will result in shrinkage cracks.

Excess water will result in lower strength.





# TOKYO SUPERFLOW

## FLOORING COMPOUND

TOKYO SUPERFLOW FLOORING COMPOUND is a self leveling cementitious flooring compound. Which can be applied manually or by pump to achieve rapid, flat leveled substrate prior to the application of the final floor finish. Typical uses are in warehouses, factories, manufacturing facilities, hospitals, commercial buildings, residential and domestic properties etc. Apply two coats of primer before laying the product. Recommended thickness of coating for a floor is between 5-10 mm.

Water addition levels for mixing, Temperature of floor and surrounding, covering the area quickly after laying and application of hardener are the critical areas to be considered before laying.



# TOKYO SUPERSET

## BLOCK BOND

In the conventional cement/sand masonry mortar the mortar layer dries up before it reaches peak strength, resulting in cracks. This lowers the adhesion strength between bricks or blocks.

TOKYO SUPER BLOCK BOND is a self curing type mortar and does not need pre-wetting of block surface or curing after application.

TOKYO SUPER BLOCK BOND is the most suitable masonry mortar for laying AAC, CLC and cement/sand blocks. It is premixed. Just add water and it's ready to use.

TOKYO SUPER BLOCK BOND is to be used 5 mm thick over conventional jointing mortar of 12 – 18 mm thickness.



# PROJECTS



**Lotus Tower Project**  
TOKYO SUPERBOND TILE ADHESIVE (HIGH PERFORMANCE)



**Peradeniya General Hospital**  
TOKYO SUPERBOND TILE ADHESIVE (HIGH PERFORMANCE)



**Asiri Hospital - Kirula Road**  
TOKYO SUPERBOND TILE ADHESIVE (STANDARD SET)



**Grand Kandyan Hotel (Devon Hotel Group)**  
TOKYO SUPERBOND TILE ADHESIVE (STANDARD SET)



**Anantara Kalutara Resort**  
TOKYO SUPERBOND TILE ADHESIVE (STANDARD SET)



**Pegasus Reef Hotel, Wattala**  
TOKYO SUPERBOND TILE ADHESIVE (STANDARD SET)



**Fairway Apartments**  
TOKYO SUPERBOND TILE ADHESIVE (HIGH PERFORMANCE)



**Nasandhura Palace Hotel, Maldives**  
TOKYO SUPERCAS (WALL PLASTER)



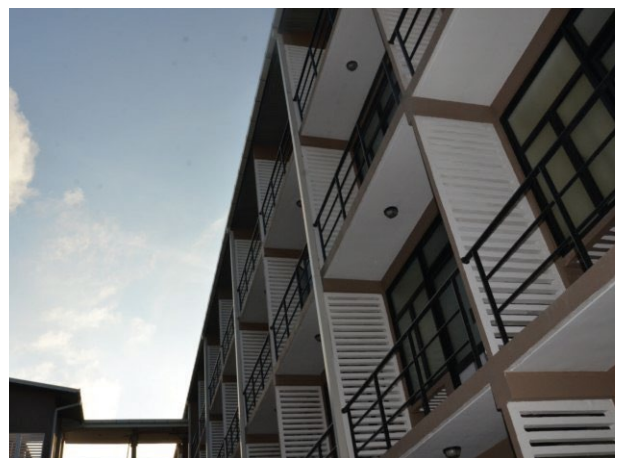
**Suncity Apartments, Kollupitiya**  
TOKYO SUPERCAS (WALL PLASTER)



**Capitol Twin Peaks, Slave Island**  
TOKYO SUPERCAS (WALL PLASTER)



**Goldi Sands Hotel, Negombo**  
TOKYO SUPERSEAL (WATERPROOFER)



**Sri Jayewardenepura University - Hostel**  
TOKYO SUPERSEAL (WATERPROOFER)

 **TOKYO SUPERMIX**  
**THE NATION'S**  
**LARGEST**  
**CONCRETE**  
**SUPPLY NETWORK**





TOKYO SUPERMIX is about building confidence. What we offer is not just a concrete mix, but the concrete confidence that your finished project, be it residential or commercial in nature, will reach its fullest potential. What sets us apart is our commitment to maintaining consistent quality across our products coupled with exceptional customer service in all aspects. By cultivating the right quality in concrete, we guarantee our consumers the peace of mind and confidence to expand further and reach greater heights.

TOKYO SUPERMIX, the nation's most trusted brand of Ready Mix Concrete is produced by the TOKYO CEMENT GROUP: the leading manufacturer of high quality cement. Unlike any other ready-mix manufacturer in Sri Lanka, this allows for unprecedented vertical integration and total control over our entire production process.



## HIGHEST STRENGTH

Only concrete manufacturer to reach up to C100



## LARGEST CAPACITY

Cumulative supply capacity of 384 M<sup>3</sup>/hr



## BROADEST RANGE

Over 20 different concrete mix designs



## WIDEST NETWORK

11 Concrete batching plants island-wide



## BIGGEST FLEET

Over 125 truck mixers & pump cars



## GUARANTEED QUALITY

Nation's only ISO certified concrete & cement laboratory



## UNINTERRUPTED SUPPLY

Just-in-time delivery around the clock



## QUALIFIED & EXPERIENCED STAFF

Assistance by experts for an unparalleled service

# PROJECTS



Keells City Cinnamon Life



Orion City



Altair



Shangri La Hotel & Shangri La Towers



Avic Astoria

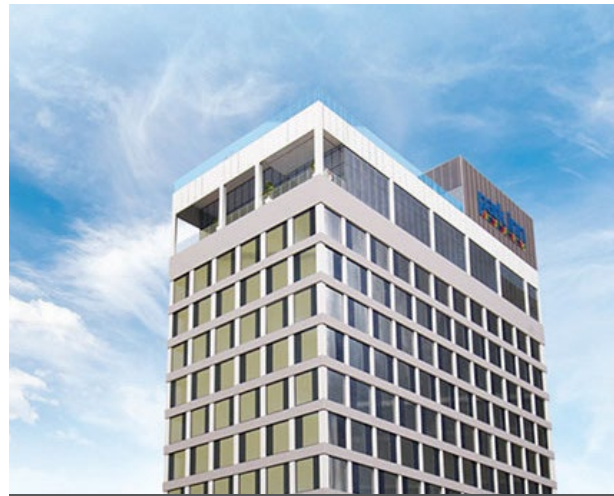


Fisheries Harbor – Dikowita

# PROJECTS



Toll Gates of Southern Expressway  
Kurundugaha-Hathakma



Park Inn by Raddison



Ministry of Labour - Narahenpita



Kerawalapitiya Waste to Energy Project



United States Embassy in Sri Lanka



Havelock City

# OUR CONCRETE SOLUTIONS

TOKYO SUPERMIX offers a range of mix-designs to satisfy varying customer requirements in a vast range of applications from high rise buildings, water projects, highways and bridges to decorative concrete for commercial and residential buildings. TOKYO SUPERMIX is proud to be the trusted choice of leading construction firms and building consultants, not only for local projects but also for multinational collaborations that are redefining the country's landscape.

## NORMAL PUMPABLE CONCRETE

A hassle-free, versatile solution used for multiple concreting requirements in various parts of a construction, ranging from casting of structural elements to finishing floors and bathrooms. Recommended for small sized commercial buildings, houses, culverts, factory floors and lower levels of taller buildings, normal pumpable concrete is available in strength grades C15 to C45, with 20 -150mm slump and can be pumped up to about 5 floors of a building.

## HIGH FLOW CONCRETE

A design specially formulated to deliver enhanced flowability with minimum segregation, making it easier to pump concrete to heights exceeding 150m and flows easily through reinforcement bar matrix.

## PILING CONCRETE

This formula is especially designed with a slump of 180mm – 220 mm making it ideally suited for in-situ bored piles, that are usually fed through 'trimy pipes' requiring extra-high flowability.

## ULTRA-HIGH STRENGTH CONCRETE

In high rise buildings, columns at the bottom most levels can become significantly large due to the weight of the total structure. But necessity to maximize space and improve visual appeal demands the reduction of column sizes, thus calling for high-performance concrete that is robust yet versatile. This demand can only be met by ultra-high strength grades such as C70 and C85.

## HIGH EARLY STRENGTH CONCRETE

This special mix design garners early strength and enables the post-tensioning process, early removal of form work, intermittent shifting of formwork etc. as the case may be.

## LIGHT WEIGHT CONCRETE

Typically used to fill voids in the structures to raise floor levels to achieve functional requirements or to maintain unique aesthetic value without the burden of added weight especially in mixed-development sites such as hotels and condominiums. The unique foam blending technique used to achieve a very low density (600 – 1200 Kg/m<sup>3</sup>), so far is mastered locally only by TOKYO SUPERMIX.

## DURABLE CONCRETE

Durable concrete conforms to requirements like sulphate and chloride resistance and low water absorption etc., and is normally prescribed for harsh environments such as marshy or marine by the consultants.

## TEMPERATURE CONTROLLED CONCRETE

In structural elements such as thick raft foundations and large-sized columns/beams temperature of the 'core' needs to be maintained below 72-75°C depending on the consultant discretion. Formulation of low temperature concrete needs total temperature control of all ingredients, a range of specific ancillary equipment such as high capacity water chillers, ice crushing machines, freezer containers and scientific expertise and technological insights to use the right mix of cementitious materials and admixtures in achieving this precision-driven solution mix. Equipped with state-of-the-art machinery and batching plants, TOKYO SUPERMIX has achieved temperatures as low as 26 °C

## FREEZE-THAW RESISTANT CONCRETE

A special mix design with the ability to prevent concrete from cracking due to fluctuating temperatures (I.e. cold storage facility). Fly Ash blending and use of other special ingredients enables to meet varying demands of frozen and thawed cycles, and withstand sudden expansion or shrinkage due to water freezing.

## NON-SHRINK CONCRETE

A concrete design with special properties which allow better bonding to avoid air traps. Seamless super-flat floors need minimization of shrinkage to avoid crack formation. Therefore concrete is mixed with steel fiber reinforcement as steel bar reinforcement usage can give rise to crack formation.

## SELF-COMPACTING CONCRETE

A free-flowing concrete that flows through the spaces in the rebar-matrix and fills up the form work without segregation eliminating the need for poker vibrating, whilst achieving a honeycomb free structure. This also helps to avoid high dependency on labour and reduces time taken for manual compacting of floors and slabs.

## EXPOSED CONCRETE WITH CORROSION INHIBITORS

The special corrosion inhibitors are added to the durable concrete design in order to improve corrosion resistance of the construction significantly in order to maintain longevity of the structure.

## WATER PROOF CONCRETE

A hydrophobic ingredient is added to the blended cementitious materials to arrive at a design that maintains a very low water-cement ratio. This produces a dense and low water permeable concrete, typically used for below ground level structures and water tanks.

## UNDERWATER CONCRETE

A Special concrete solution, placed usually through a steel casing, is enriched with a viscosity modifying agents which gives the concrete anti-washout properties.

## COLOUR CONCRETE

Leaching free colour concrete is done by adding the correct combination of cementitious materials, admixtures & colour pigments to the concrete. Later the surface is cut and polished using diamond cutting wheels resulting a maintenance free floor finish that does not need waxing or sealant application.

## FAIR FINISH CONCRETE

A special mix that has high flowability and exact quantities of fine particles enabling a durable and maintenance free smooth finish.

## EXPANSIVE OR SHRINKAGE COMPENSATING CONCRETE

A shrinkage-reducing, high-performance expansive additive is used in concrete to generate the required expansion from within the concrete to compensate for the general shrinkage taking place during concrete hardening. Thus the possibilities of micro-cracks / capillary formation is eliminated and 'water tightness' is improved to ensure 100 years lifetime.

## SHOTCRETE CONCRETE

A cost effective thin concrete layer is achieved by using Only 0-5 mm fine aggregates and 5-14 mm chips. The mix is sprayed on to surfaces needed stabilizing or improvement using a special pumping machine with a chemical accelerator. This accelerator is simultaneously fed with the concrete mix setting in quick hardening.

## FLOWABLE / PUMPABLE SCREED MORTAR

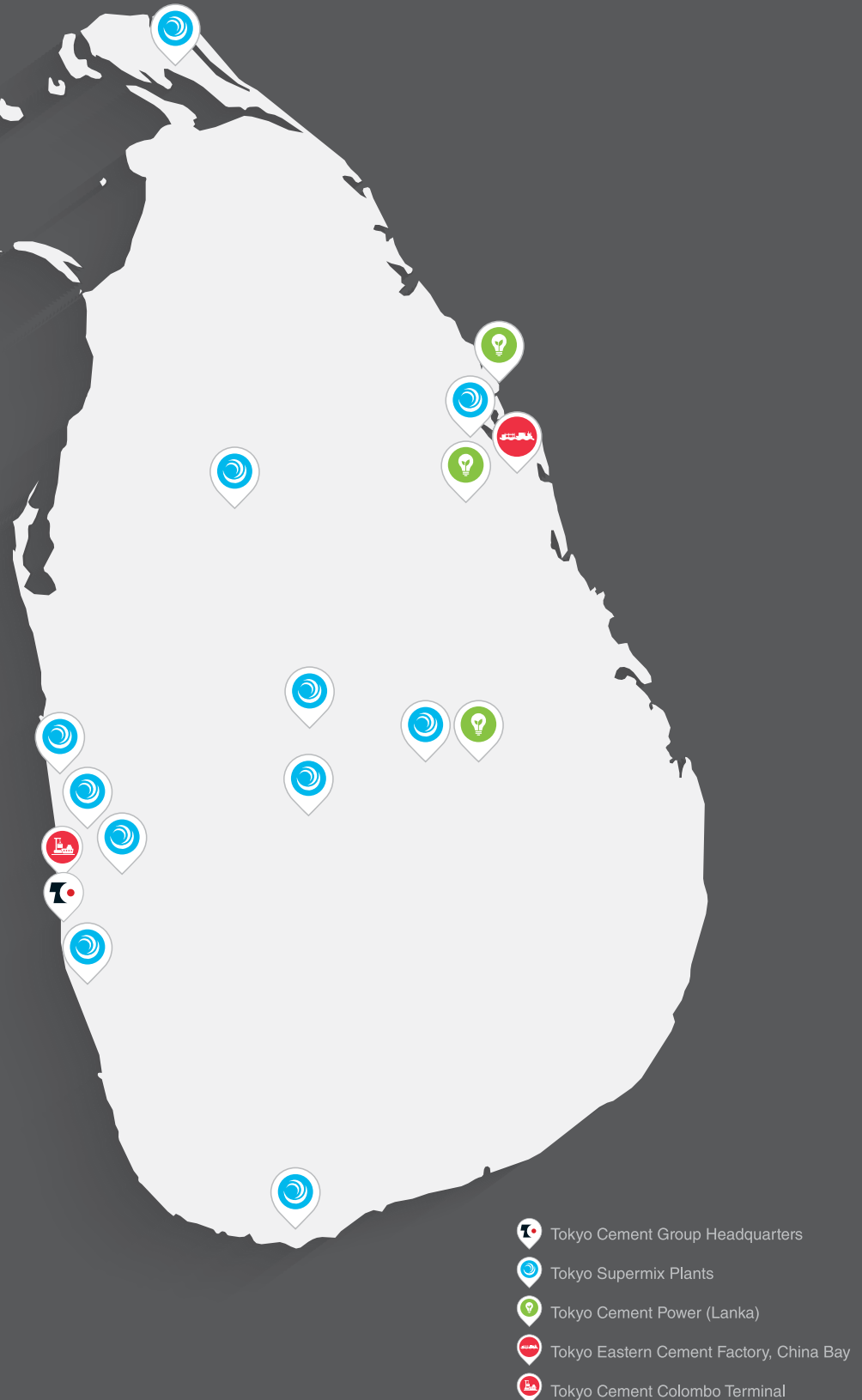
Unwashed Manufactured Sand with more fine particles and Blended Cement based mix design uses a PCE admixture. This combination creates the necessary pumpability and flowability required in this application. Flowability enables masons to lay it several times faster using longer leveling bars with the aid of pre-set levels covering larger areas in different floors of multistoried buildings.

## DECORATIVE ARCHITECTURAL CONCRETE

Decorative Concrete without any further finishing requires a high degree of uniformity in color and overall appearance. The latex formwork boards used generates a 'wood grain' finish on the concrete surface. Manufactured Sand and Blended Cement based mix design uses a PCE admixture.

# INVESTING BACK IN OUR NATION

Our geographical footprint is one testament of our commitment to enrich our country, its people and the environment. As a truly home-grown corporate with roots embedded deep in the very fabric of life in Sri Lanka, we have invested back in our own country and community that have helped nurture TOKYO CEMENT to become who we are today.







# Our People and Processes

Tokyo Cement Group believes in Sri Lanka. From the power of its diversity, to the ambition of its people, to the ingenuity of every citizen, we are a nation with incredible promise. Being a truly home-grown company, Tokyo Cement Family is an embodiment of this potential. Our legacy of nearly four decades, is a testament of how we have successfully harnessed this spirit to help build our nation.

Our team of highly skilled professionals take great pride in our work, raising the bar on quality and service excellence. We are also a passionate team of individuals who constantly push boundaries to deliver the best. This inimitable combination has resulted in an organizational culture that seeks continuous improvements, enabling our products and services to truly exceed customer expectations.

The growth of Tokyo Cement is a culmination of our team's commitment, matched by the loyalty of our channel partners; made up of distributors, sub-dealers and retailers spread across every part of Sri Lanka, with whom we share our success. Their confidence encourages us to reach higher, making Tokyo Cement Group one of the country's most loved and respected brands.



# Enriching Lives

Decades ago we made a promise to be the trusted partner in building our Nation. That involved partnering the country in all aspects of its progress and making sure the impact of our work is felt across economic, social and environmental spheres. As a truly homegrown company, we readily undertook this bigger responsibility which was our opportunity to give back to the Nation that nurtures us.

We intend to create greater value for our nation through our performance in areas of the Triple Bottom Line Framework. As part of this, we have adopted efficient business practices focused on achieving Profitable growth. We also foster a select set of programs to make a positive imprint on our People and the Planet.

Our work with the professional groups aims to inspire them to work smart, so that the country improves its productivity. Similarly, we inspire new thinking and knowledge sharing across the industry so that the country is ready to leap ahead in its growth trajectory.

To empower the underprivileged we work with and touch the lives of many community organizations, who in turn collectively help create a bigger sum total impact. By making social consciousness a key business priority, we have shared our success with a larger community who look up to us for a positive change in their lives. The one unifying theme that runs across all these programs is Tokyo Cement Group's unwavering commitment to uplift our Nation to stand tall and strong.



# Sustainability

As a champion of sustainability, Tokyo Cement Group is extremely mindful of the impact of its activities on the natural and social environments. We take great care to ensure our resource footprint is minimised, and that we leave a positive impression on the world outside, through all our interactions.

This thinking is ingrained all the way down in our product strategy as well, where we continuously reengineer our offering to maximise resource usage, and enable our customers to do more with less.

Our growth is fueled by the growth of our nation, and the responsibility of sustaining this growth momentum lies back on us. Therefore, the responsibility to give back to the society and the country that nurtures us, is an obligation the company takes very seriously. Guided by this principle, the company fosters several tailored projects that have now become synonymous with Tokyo Cement, distinguishing us as a true Sri Lankan committed to make a difference.

All the programs Tokyo Cement is associated with, are carefully crafted to ensure that our resources are channeled to make a real and lasting impact. These initiatives, enable us to enrich the lives of our community on one hand, and on the other, help us conserve the country's rich biodiversity for our future generations.

While helping us fulfil our socio-environmental responsibility as the No.1 cement and concrete manufacturer, these programs have also enabled Tokyo Cement to become one of the most loved and respected brands in Sri Lanka.

# BIOMASS ENERGY PROGRAMME



Tokyo Cement Group pioneered renewable energy generation in the local corporate sector with the setting up of Sri Lanka's first-of-its-kind 10MWh biomass power plant in 2008 in Trincomalee and Sri Lanka's first large scale Dendro power plant with a capacity of 6MWh in 2014 in Mahiyangana.

Under its community trade sustainable fuel-wood supply program, the project has so far planted over 6 Million Gliricidia trees in Badulla and Trincomalee Districts and surrounding areas of the power plants. Every year, we divert a significant portion of our total energy bill to these framers, enabling cash flow to our very own rural economies. The projects engage nearly 2,500 farming families creating hundreds of direct and indirect employment opportunities in the rural farming sector.

With the addition of a 8MWh capacity biomass power plant at Tokyo Eastern Cement Factory premises in Trincomalee, in 2017, Tokyo Cement Group became the single largest contributor of biomass-based renewable electricity in Sri Lanka with the total installed capacity of 24MWh of electricity. With this we were able to fulfill 100% of the Group's energy requirement without having to burden the national power grid.

Marking yet another milestone, our Mahiyangana Power Plant became Sri Lanka's first Dendro-Solar Hybrid Power Plant in 2019, by adding 600KWh solar power to its existing dendro power capacity.




We are 100% energy independent & our entire local production process is based on Renewable Biomass Energy



Our Renewable Energy Initiative contributes 60,000 MW/h of green electricity per annum to the national grid




This has helped us reduce our carbon foot print to 100,000MT CO<sub>2</sub> per year




Our production of **160,000 MW/h** of clean renewable energy a year

=




the carbon sequestration of **100,000 acres** of forestland per year



**NOT emitting 82,746 MT** of Greenhouse gasses to the environment

=



the annual electricity usage of **100,000** average Sri Lankan rural homes


=

**NOT driving 271 Mn miles** by cars, which equals to **10,000 times** around the Earth


**NOT consuming 35 Mn Liters** of fossil fuel

taking **17,420** passenger vehicles **OFF** the roads per year

OR



**55,000 Tons** of coal **NOT** burnt



**NOT sending 32,400 MT** of garbage to dump yards

# MANGROVE REFORESTATION PROGRAMME





Most of the mangroves in high security areas off the coast of Trincomalee was cleared during the war due to security reasons. Our Mangrove Reforestation project aims to rehabilitate this destroyed mangrove habitat in and around the Bay of Trincomalee. We established our very own Mangrove Nursery within our factory premises in October 2012, where naturally fallen seeds are collected and propagated in a controlled environment.

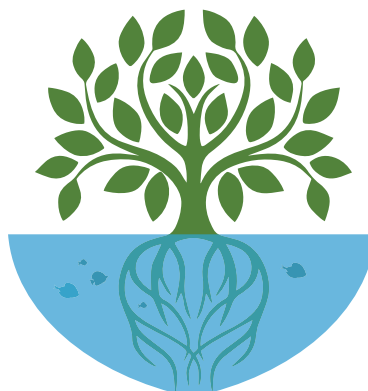
The project is implemented in collaboration with the Sri Lanka Navy Eastern Command and local fishing communities. The nursery hosts 10,000 mangrove saplings belonging to 7 different native species. The replanting is done following the natural composition of the Cod Bay mangrove habitat, with technical guidance from conservation experts.

Since inception, we have planted over 60,000 mangrove saplings around the Trincomalee bay, with the assistance of Sri Lanka Navy. 17,000 samplings planted in the coastal land around our factory has now become a flourishing mangrove habitat. As the project progresses, we use seeds from the initially replanted trees to regenerate the destroyed mangroves in the East Coast.



We follow the **natural composition of mangrove habitat** in Cod Bay to replant.

**17,000 saplings** planted along the coast around our factory is now a flourishing mangrove habitat.



The Mangrove Nursery within our factory premises hosts **10,000 saplings** belonging to **7 native species**.

Since inception, we have planted **over 60,000 mangrove trees** around the Trincomalee bay, together with Sri Lanka Navy.

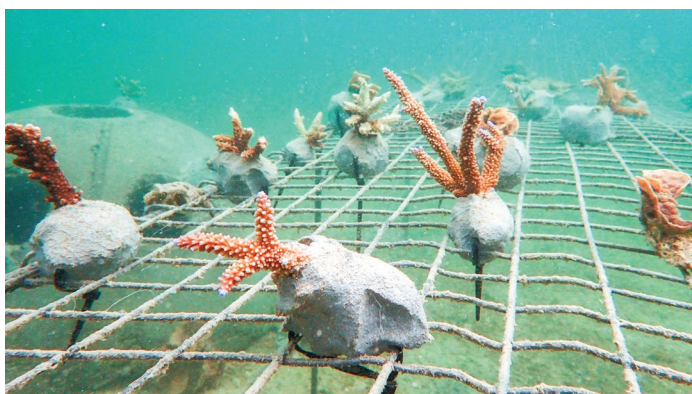
# CORAL REEF CONSERVATION



Our Coral Reef Conservation Project aims to rehabilitate the damaged and destroyed reef barrier along the Eastern coast of Sri Lanka. In 2012, Tokyo Cement together with a group of likeminded partners started deploying Reef Balls; hollow structures made using recycled concrete waste from our Ready Mix Concrete plants, as substrate for new corals to grow on, as part of the initiative. In 2016, the project tied up with two marine conservation groups, who bring in their expertise in local and international scientific research to support the conservation efforts.

Project partner Wildlife Research and Conservation Trust bring in their expertise in setting up coral nurseries, where coral nubbins of different types nurtured under supervised conditions, until they are planted on the existing reef layer or on reef balls. As the project evolved we partnered Blue Resources Trust, who conduct long-term monitoring studies of the Kayankerni Reef in Passikudah, together with the Wildlife Department of Sri Lanka. 'Dive Sri Lanka, Dive Seenigama'; the diving arm of the Foundation of Goodness, helps us extend our Coral Conservation efforts along the Southern Coastline. Sri Lanka Navy supports us extensively, by deploying reef-balls right around our shoreline, in places where the existing reef barrier is severely damaged.

To ensure the long-term sustainability of the Tokyo Cement Coral Reef Conservation Project, this consortium of partners conduct capacity building and training programs for university students and volunteers. We also carryout community educational programs and collaborative coastal cleanups to build awareness and encourage greater participation of local communities.



## Research & Education



Established a long-term coral reef monitoring program.



Capacity building by providing research training to university students and volunteers.



Community education and collaborative cleanups.

## Conservation



Facilitate the declaration of the Kayankerni Marine Sanctuary as the 17th Marine Protected Area in Sri Lanka.



Mapped the Kayankerni reef system, which became one of 7 sites globally to be included in the Allen Coral Atlas (a global initiative to map and monitor coral reefs).

# FROM THE CONCRETE JUNGLE TO A GREENER TOMORROW



Years ago, we made a promise to do everything in our power to change our country 'from the concrete jungle to a greener world'. And in keeping up with this promise, we set forth on a journey made up of many small steps, that take us and our future generations towards a greener, healthier, and sustainable tomorrow.

Marking an important milestone in this journey, in 2017 we partnered the Forest Department of Sri Lanka, to set up two forest nurseries; one at our Trincomalee Factory and another at the Mahiyangana power plant premises. Under this project, each nursery produces over 10,000 native forest tree plants per year. The project propagates valuable indigenous trees with medicinal properties, such as, Kumbuk, Karanda, Mee, Ingini etc., so as to replenish our natural forest cover while educating future generations of our rich biodiversity.

The grown plants are used in National Reforestation Programs carried out by the Department of Forest Conservation, and for Urban Forestry Programs carried out by provincial governments to create healthy living environments in cities for urban dwellers.



We are actively involved in conserving Sri Lanka's unparalleled biodiversity for our future generations.



Our 2 forest tree nurseries; at Trincomalee Factory and at Mahiyangana power plant premises, host 10,000 plants.



We help propagate valuable indigenous trees with medicinal properties such as, Kumbuk, Karanda, Mee, Ingini etc.



So far, we have distributed over 15,000 plants island wide, through the Forest Department of Sri Lanka and various farming community groups for National Reforestation Programs.



0112 558 100/ 0112 500 466/ 0112 592 308  
469 1/1, Galle Road, Colombo 3, Sri Lanka.  
[www.tokyocement.lk](http://www.tokyocement.lk)